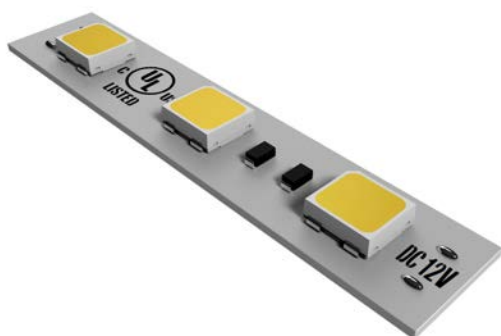




TYPE:
PROJECT:
MODEL NO.:
DATE:

Tape | RGB

Up to 350 lumens per foot (white)



Superior Performance

Lumenova™ RGB tape light is dimmable and fully controllable, with 2" increment cut locations and solder-less connectors.

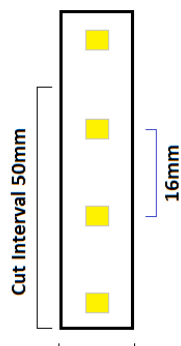
Applications

- Coves
- Counters
- Soffits
- Display

Summary

- Energy efficient, high efficacy —up to 63 lm/W
- Long life — 50,000 hour average rating
- Use with electronic plug-in drivers only
- Dimmable
- Reverse wire protection*

Dimensions



10mm Indoor
12mm Wet Location
13mm Submersible

2.5mm Indoor
3mm Wet Location
4.8mm Submersible

Specifications are typical values and may change without notification. Lumenova™ and related graphics are trademarks of CRS Electronics, Inc.

*Reverse wiring will not damage tape. Must be wired correctly for proper operation.

Ordering Guide

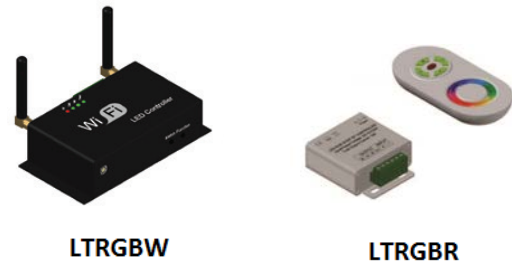
L	T	RGB	12IN	Options
Brand	Type	Output	Length	
L = Lumenova	T = Tape Light	RGB = Color Changing	___IN = Inch ⁶	(blank) = Indoor W = Wet Location S = Submersible

Notes:

1. Indoor = IP20, Wet Location = IP65, Submersible = IP68.
2. Indoor and wet location include 3M adhesive, submersible does not include adhesive
3. Maximum run length 20'.
4. 5 Year Warranty.
5. See below for accessories.
6. Must be ordered in 2" increments between 12" and 240".
7. Electronic transformers only.

Accessories

L	T	RGBR
Brand	Type	Output
L = Lumenova	T = Tape Light	RGBR = 216W RF control RGBW = 144W Wi-Fi control ³ 36P = 36W plug and play 60P = 60W plug and play 120P = 120W plug and play



LT36P / LT60P / LT120P

Notes:

1. Electronic transformers only.
2. Dim secondary side only.
3. Wi-Fi controller requires smart phone, does not include remote control.

TRANSFORMER	WATTS	TYPE	LENGTH	WIDTH	DEPTH	120V CORD LENGTH	12V CORD LENGTH	DIMMING SIDE
LT120P	120	Plug & Play Electronic	9"	2 5/8"	1 5/8"	42"	42"	Secondary
LT60P	60	Plug & Play Electronic	7"	1 15/16"	1 1/4"	48"	54"	Secondary
LT36P	36	Plug & Play Electronic	5"	1 1/2"	1 1/8"	55"	55"	Secondary

Specifications are typical values and may change without notification.
Lumenova™ and related graphics are trademarks of CRS Electronics, Inc.