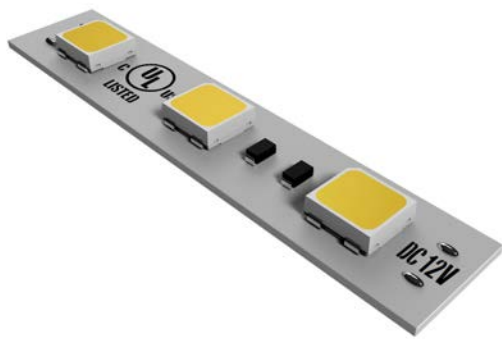




TYPE:
PROJECT:
MODEL NO.:
DATE:

## Tape | HO

Up to 377 lumens per foot



### Superior Performance

Lumenova™ tape light is available in multiple color temperatures with 2" increment cut locations and solderless connectors.

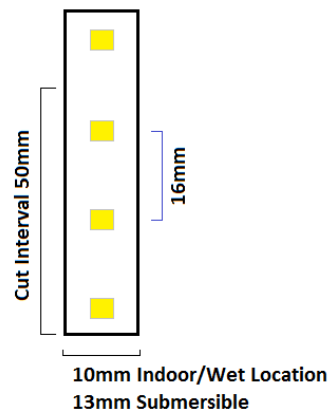
### Applications

- Coves
- Counters
- Soffits
- Display

### Summary

- Energy efficient, high efficacy —up to 69 lm/W
- Long life (5 year warranty) — 50,000 hour average rating
- Five color temperatures —2200K, 2700K, 3000K, 3500K or 4000K
- 20' reels include 2' pre-soldered leader cable on each end
- Reverse wire protection\*

### Dimensions



Specifications are typical values and may change without notification. Lumenova™ and related graphics are trademarks of CRS Electronics, Inc.

\*Reverse wiring will not damage tape. Must be wired correctly for proper operation.

### Specifications

CCT (k)	LUMENS (ft)	WATTS	VOLTS	EFFICACY (lm/W)	LIFE (HOURS)	DIMMABLE
4000K	377	5.5	12VDC	69	50,000	✓
3500K	370	5.5	12VDC	67	50,000	✓
3000K	362	5.5	12VDC	66	50,000	✓
2700K	350	5.5	12VDC	64	50,000	✓
2200K	285	5.5	12VDC	52	50,000	✓

### Ordering Guide

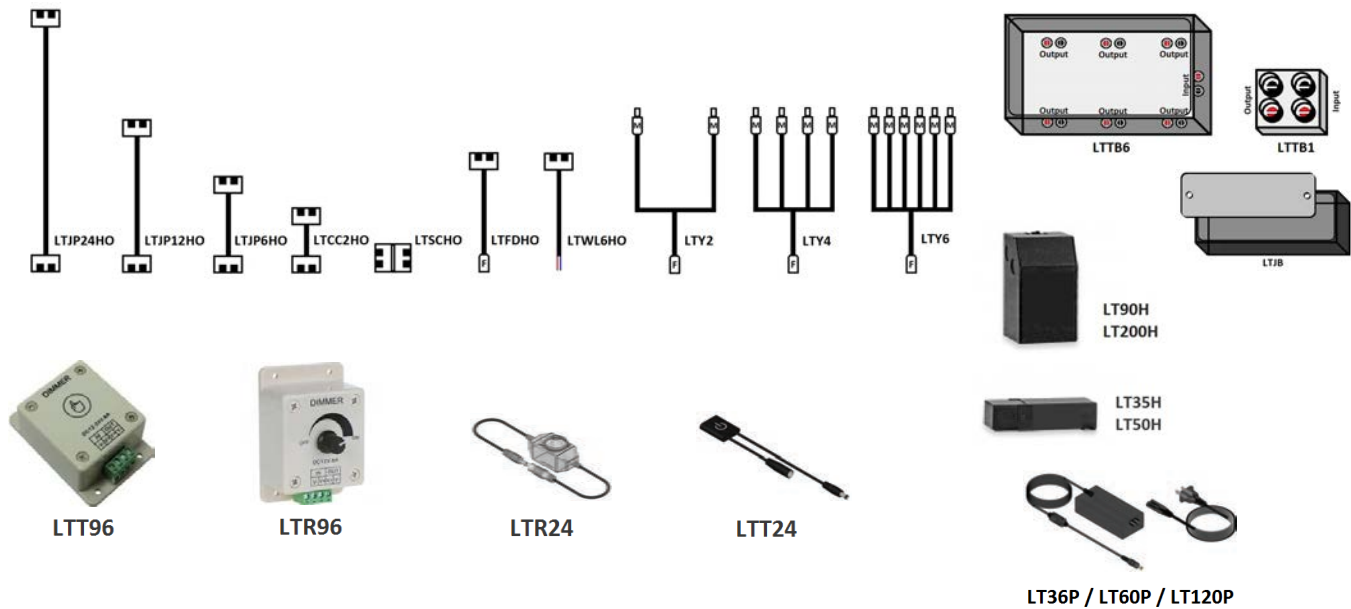
L	T	HO	30	20	Options
Brand	Type	Output	CCT	Length	
L = Lumenova	T = Tape Light	HO = High Output	22 = 2200K 27 = 2700K 30 = 3000K 35 = 3500K 40 = 4000K	20 = 20' 50 = 50' 100 = 100' IN = Inch <sup>6</sup>	(blank) = Indoor W = Wet Location <sup>4,7</sup> S = Submersible <sup>6,7</sup>

Notes:

- Indoor = IP20, Wet Location = IP65, Submersible = IP68.
- Indoor and wet location include 3M adhesive, submersible does not include adhesive
- Maximum run length 20'.
- Wet location available in 20' and 50' reels only.
- See Tape Accessory sheet for detailed information.
- Submersible must be ordered in 2" increments between 12" and 240".  
When ordering by the inch, the quantity equals total length.
- Wet location and Submersible only available in 2700K, 3000K and 4000K

### Accessories

See Tape Accessory sheet for detailed information.



Specifications are typical values and may change without notification.  
Lumenova™ and related graphics are trademarks of CRS Electronics, Inc.